



IOWA'S COMMUNITY HEALTH CENTERS

Community health centers provide primary medical, behavioral health, and dental services at 50 full-service sites and an additional 42 sites that include schools, nursing homes, homeless shelters, and other locations where special populations are served. In total, Iowans can access healthcare services at 92 sites statewide.

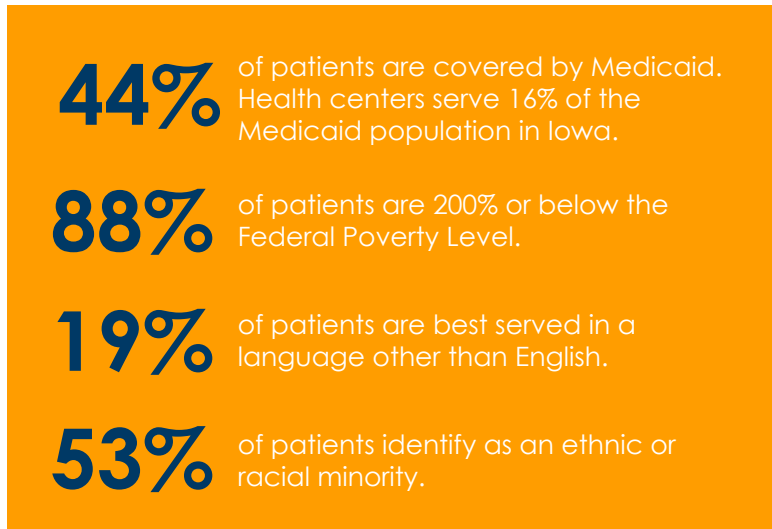
OUR SERVICES



Enabling Services: Reducing Barriers

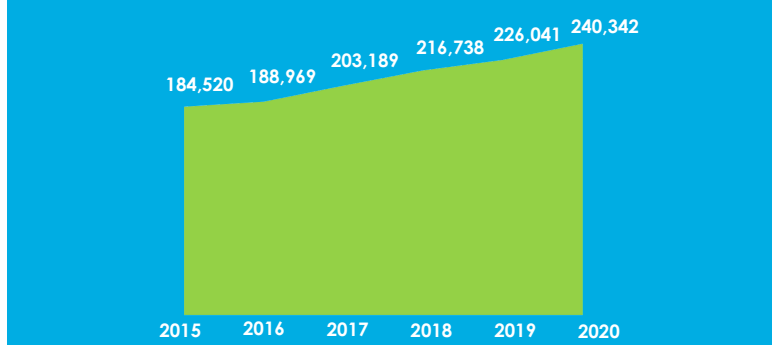
- Outreach
- Transportation
- Interpretation
- Housing
- Case Management
- Health Education
- Eligibility Assistance
- Food Insecurity

OUR PATIENTS

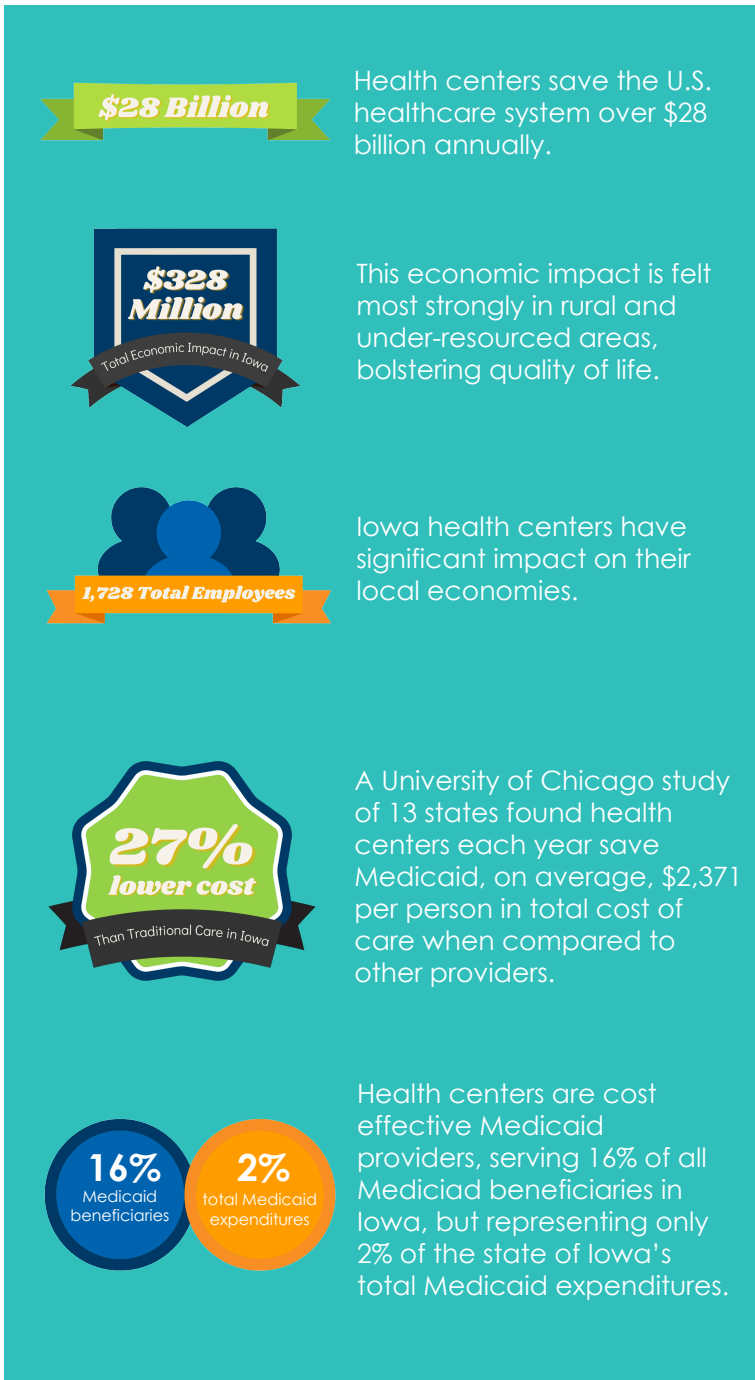


PATIENT TRENDS

Patients provided care in 2015-2020



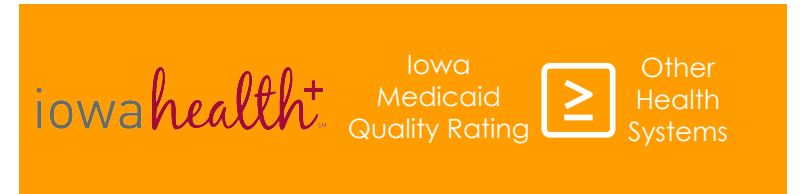
ECONOMIC IMPACT



COMPREHENSIVE CARE

ORAL HEALTH TRENDS

Since 2015, Iowa's community health centers experienced a **200% increase** in providing oral health services.

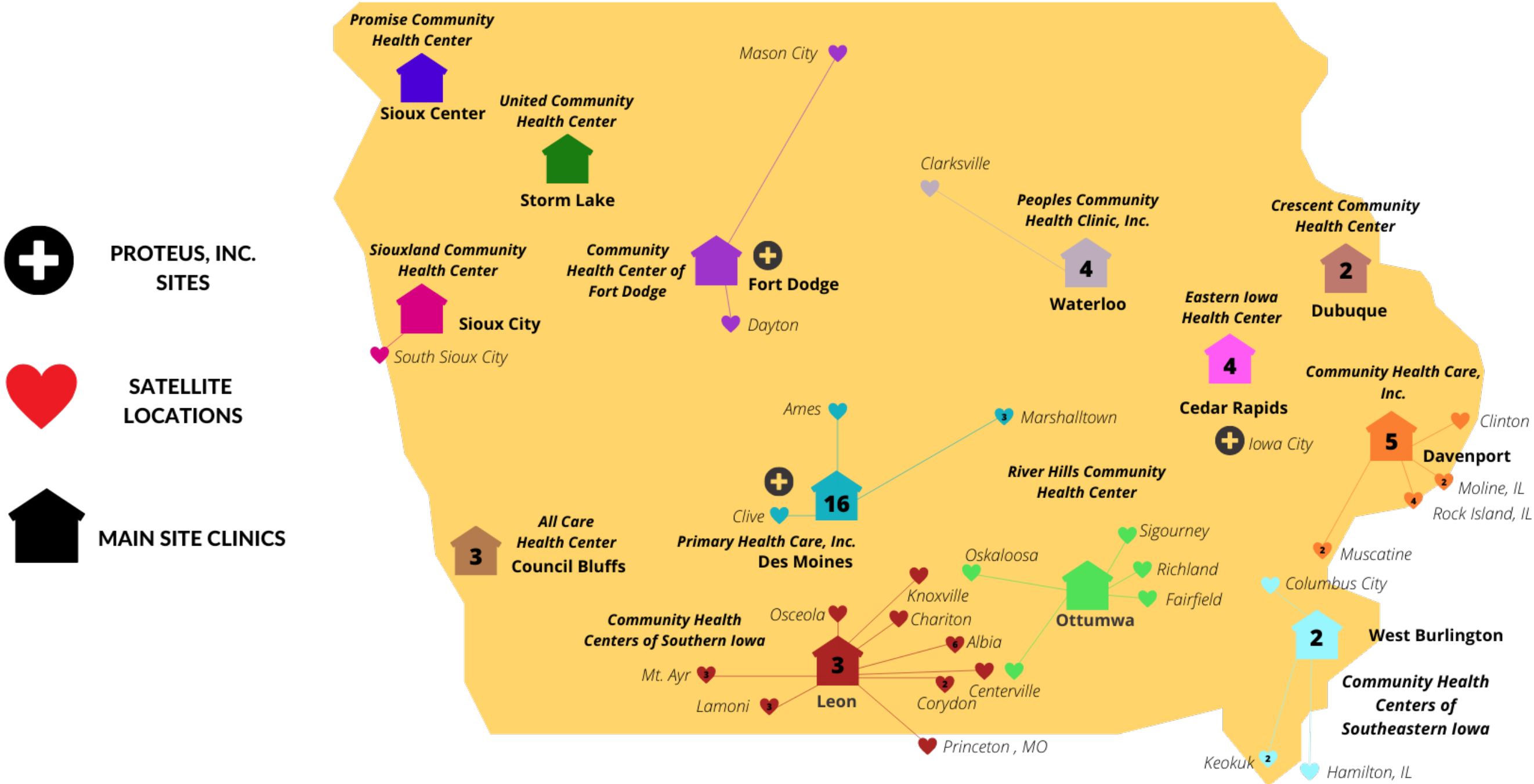


40+ Medication Assisted Therapy (MAT) Providers at Iowa health centers.

BEHAVIORAL HEALTH TRENDS

Since 2015, Iowa's community health centers experienced a **229% increase** in providing behavioral health services.

IOWA'S COMMUNITY HEALTH CENTERS



92 DELIVERY SITES IN IOWA

Community health centers provide primary and preventive healthcare services at 50 full service sites and an additional 42 sites that include schools, nursing homes, homeless shelters, and other locations where special populations are served. In total, Iowans can access healthcare services at 92 sites statewide.